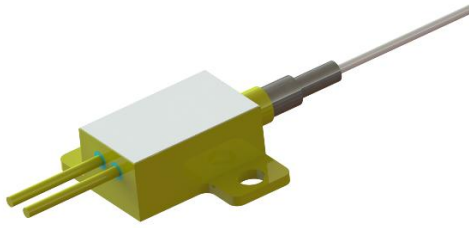
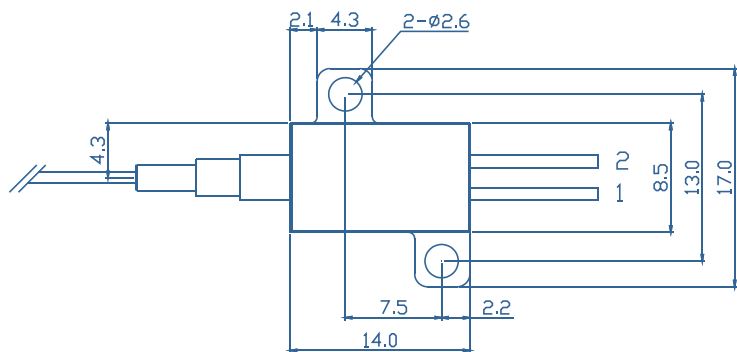
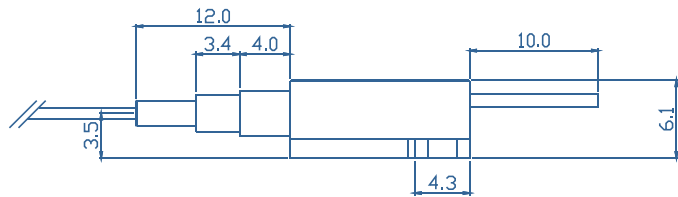
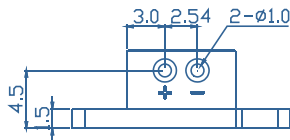


R-Series High Power Laser Diode Module



- Features**
- ◆ High output power of 10 W
 - ◆ 105μm/0.22NA multimode optical fiber
 - ◆ Center wavelength 940±5nm
- Applications**
- ◆ Pumping source for fiber laser
 - ◆ Medical
 - ◆ Materials processing

Package Dimensions (mm)



Pin-out Assignment

Pin	Function
1	LD(+)
2	LD(-)

Typical Device Performance (25°C)

	Min	Typical	Max	Unit
Optical				
CW Output Power	-	10	-	W
Center Wavelength	-	940±10	-	nm
Spectral Width (90% of Power)	-	<6	-	nm
Wavelength Shift with Temperature	-	0.3	-	nm /°C
Electrical				
Threshold Current	-	1.2	-	A
Operating Current	-	12.0	13.0	A
Operating Voltage	-	1.6	-	V
Slope Efficiency	-	1.05	-	W / A
Power Conversion Efficiency	52	55	58	%
Fiber*				
Fiber Core Diameter	-	105	-	μm
Numerical Aperture	-	0.22	-	-
Fiber Length	-	1-5	-	m
Loose Tube	-	0.9	-	mm
Min. Static Bending Radius	15	-	-	mm
Fiber Connector	-	-	-	-

Absolute Ratings

	Min	Max	Unit
Operating Temperature	-40	105	°C
Operating Relative Humidity	-	85	%
Storage Temperature	-40	115	°C
Storage Relative Humidity	-	90	%
Lead Soldering Temperature (10 s max)	-	250	°C